

Delivering the Vision

Following this consultation, Rugby Borough Council will process and consider the Application before it goes to its Planning Committee. This is likely to happen later this year.

If successful, RRSLP will then begin the job of preparing detailed plans and getting ready to start construction.

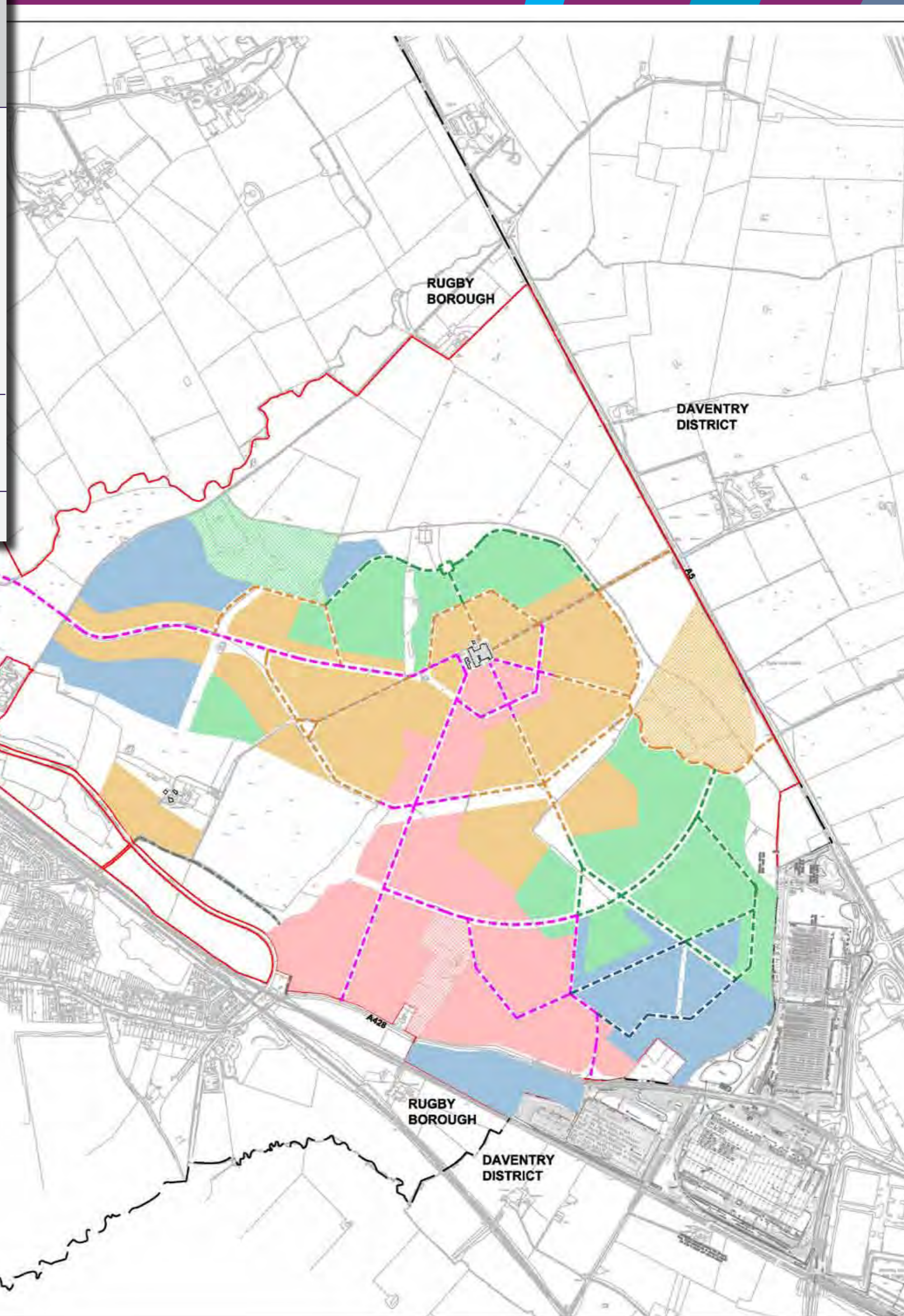
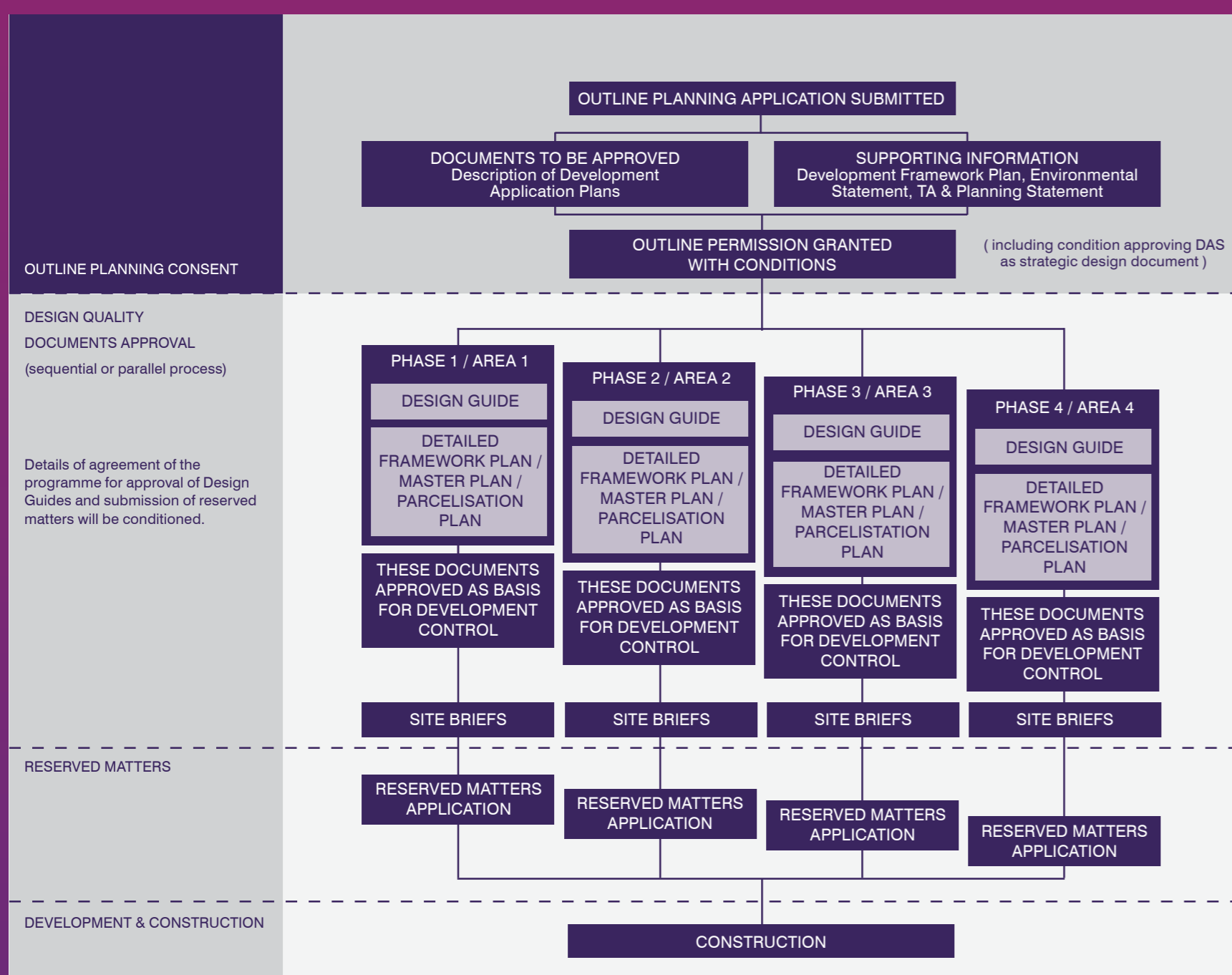
Taking the vision forward will require detailed and ongoing collaboration between the private, public and voluntary sectors.

It is likely that a wide range of development partners would ultimately be involved in building out the SUE site. It is also envisaged that it would take at least 15 years to develop the scheme through a series of phases.

BT and Aviva Investors are committed to remaining involved with the project throughout the development process. Both share a long term vision.

If planning permission is granted, Rugby Borough Council will have a key role to play in coordinating the development.

You can let Rugby Borough Council know what you think about the scheme and register any comments by completing the feedback form.



- Key:**
- Administrative Boundary between Rugby Borough and Daventry District
 - Rugby Radio Station Sustainable Urban Extension Outline Planning Application Boundary
 - Proposed Development Sequence 1
 - Proposed Development Sequence 1 Formal Open Space
 - Proposed Development Sequence 1 Primary Infrastructure
 - Proposed Development Sequence 2
 - Proposed Development Sequence 2 Formal Open Space
 - Proposed Development Sequence 2 Primary Infrastructure
 - Proposed Development Sequence 3
 - Proposed Development Sequence 3 Formal Open Space
 - Proposed Development Sequence 3 Primary Infrastructure
 - Proposed Development Sequence 4
 - Proposed Development Sequence 4 Primary Infrastructure